



Niveus Studio

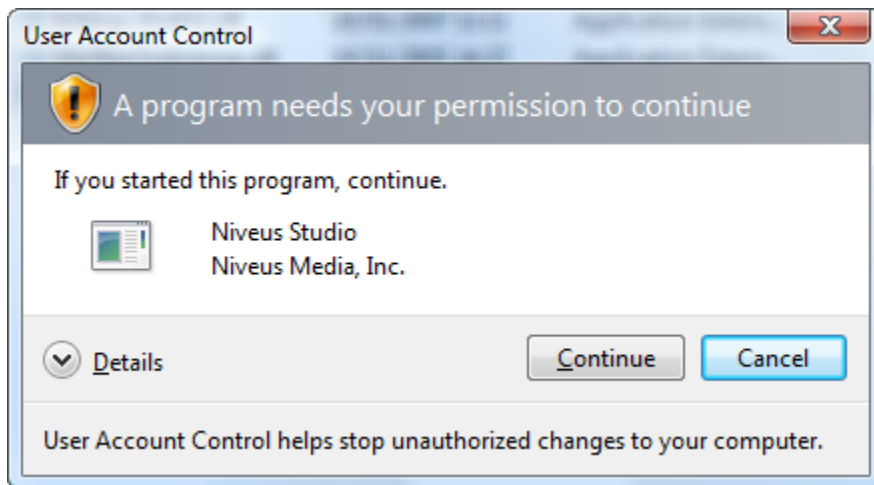
Objective: Dealers and end users can customize & tweak Media Center properties, including edit their DVD Library information. Niveus Studio is a standalone executable file (.exe) intended for the modification of DVD metadata, TV handling, My Pictures presentation, and miscellaneous aesthetic & control properties for the general Windows Media Center interface.*

Starting Out

As Niveus Studio makes changes to system settings, it requires elevated privileges to run, as indicated by the shield shown on the NiveusStudio icon.



If your system has User Account Control (UAC) enabled, you will be prompted to give your permission for Niveus Studio to run. Click “Continue” to start the Niveus Studio.



Using Niveus Studio

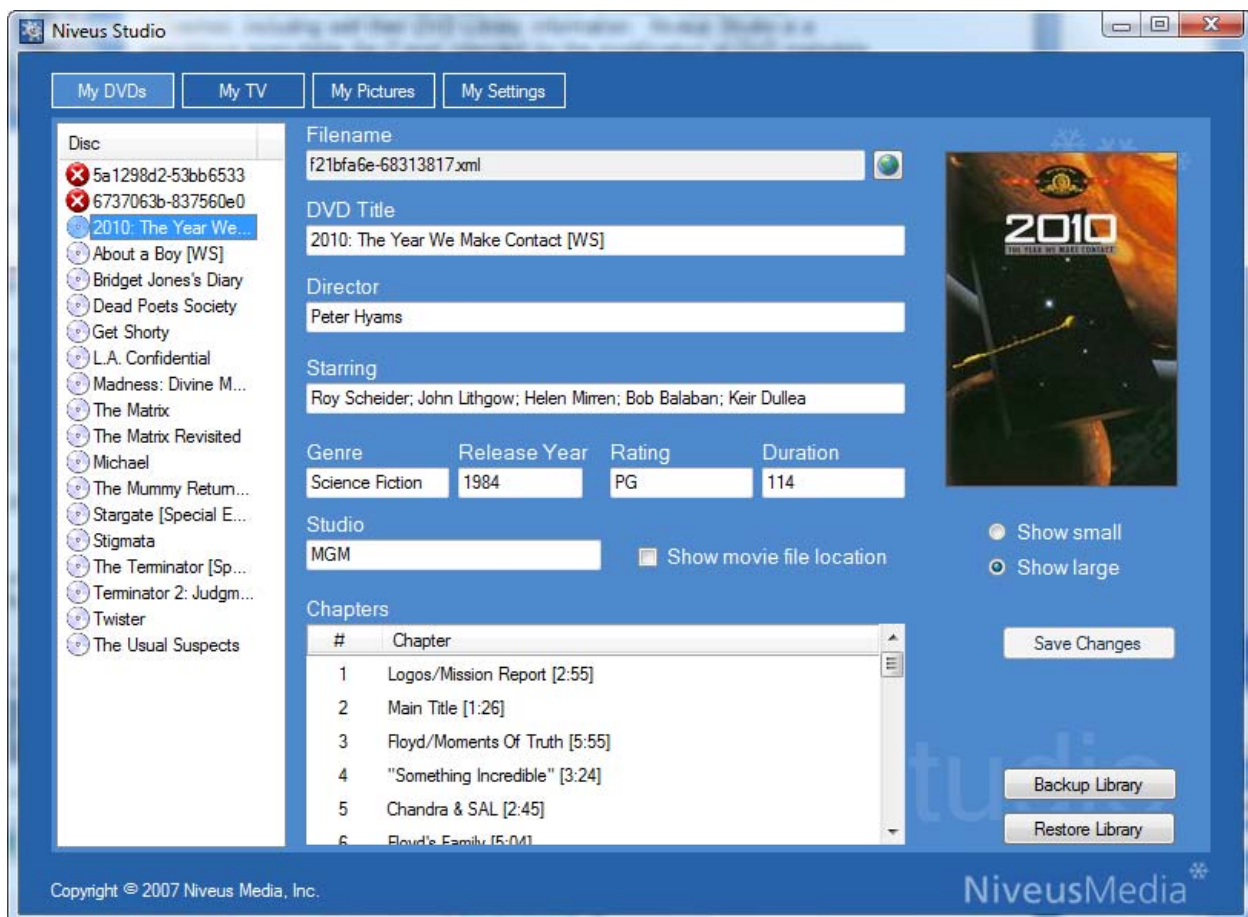
Niveus Studio is split into modules – each module customizes a different aspect of Media Center functionality – currently DVDs, TV, Pictures, and general settings. Clicking on the module button at the top of the application window selects that particular module.

Modifying film metadata with My DVDs.

For non-mainstream or foreign titles, sometimes the metadata downloaded for the disc may be incorrect or incomplete. The My DVDs module provides tools to update the metadata to accurately reflect the disc information.


Searching for missing metadata


The list on the left shows all of the discs that have been found on the Media Center.

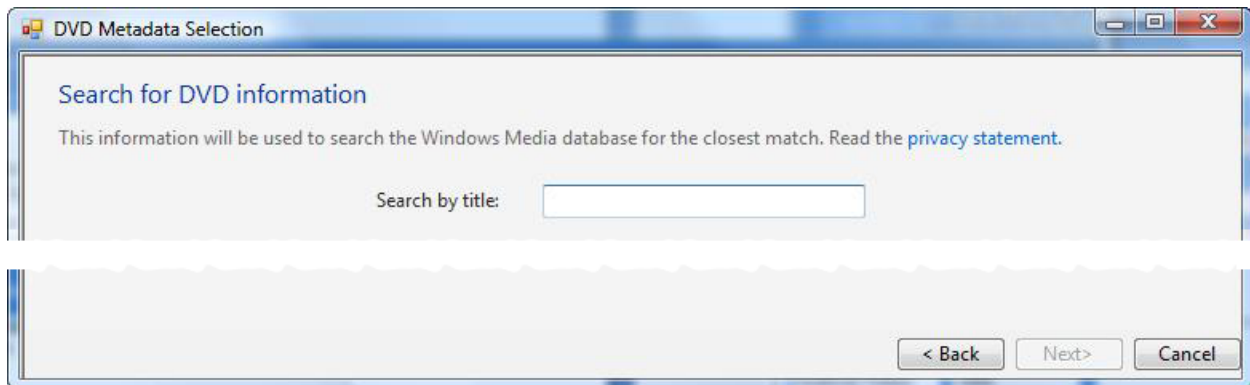


Selecting an disc from the list on the left shows the metadata already known for that disc, including any cover art that has been downloaded. All of the metadata information displayed can be changed as required.

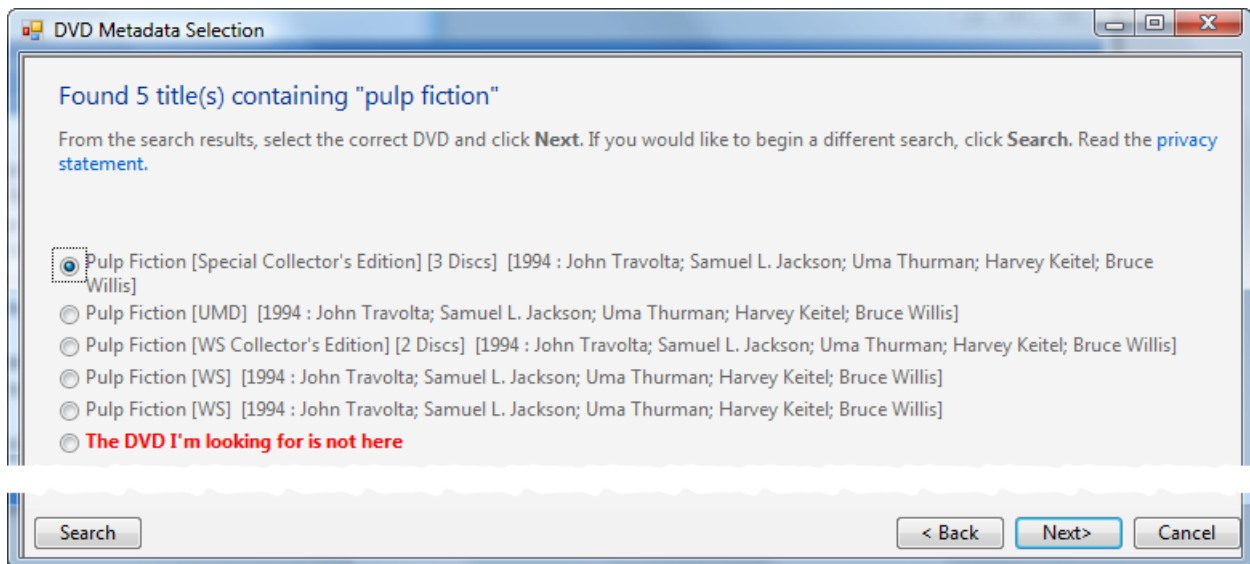
Searching for missing metadata

The  symbol indicates that no metadata was found for this disc. For discs where no information has been found at all, the best starting point is the metadata search option.

To perform a metadata search, click on the  button next to the filename field. This will open the search window and allow you to enter the title of the disc in the “Search by title” field.

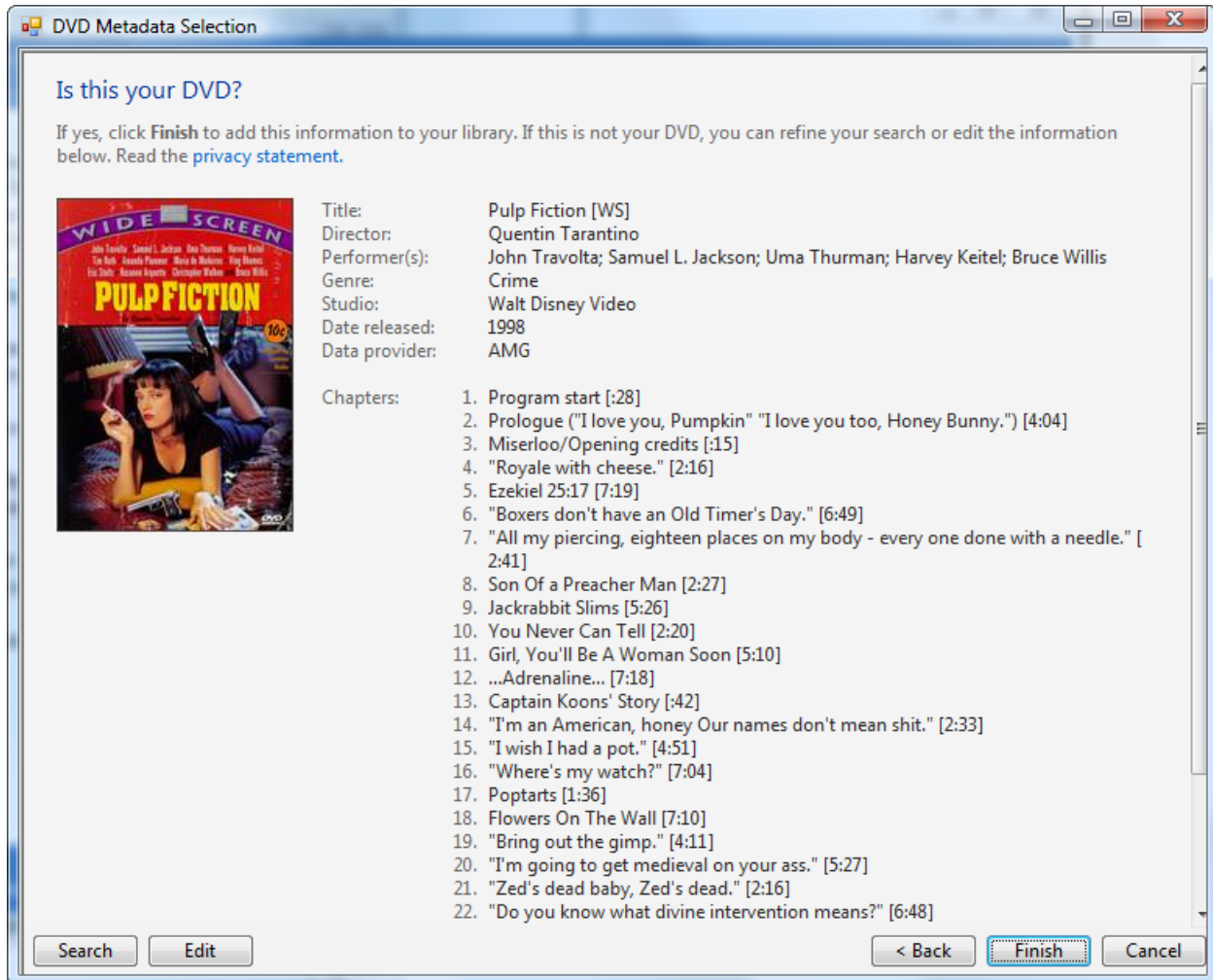


Enter the title of the film into the search field, and click “Next” or press enter. In this example, we chose “Pulp Fiction”. All titles containing your search words will be displayed. If nothing appears, try removing punctuation or removing some of the words (e.g. for “Ocean’s Eleven”, try “oceans eleven” instead).



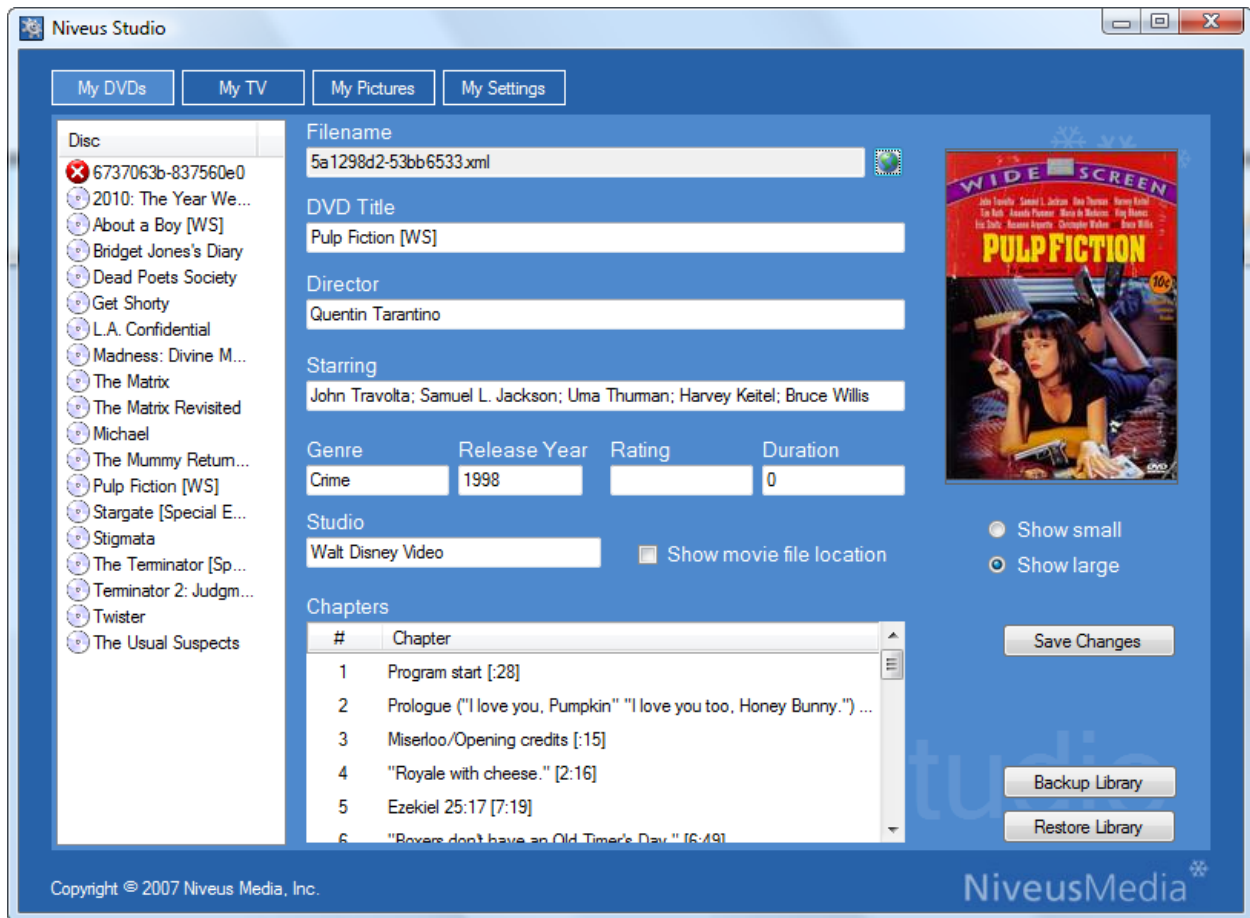
When you have selected from the search results, press “Next”.

The metadata for the DVD will be displayed so you can confirm it is the correct DVD. Sometimes a disc will appear several times in the list, as the DVD was released with different covers, or different chapters. Check the cover art against your disc box or the chapter information on the disc insert.



Once you have the correct disc, click "Finish".

When you click “Finish”, the metadata file is created automatically, and Niveus Studio is updated to show the new metadata information which has been loaded for the disc.



Manual updating of metadata

For minor changes to metadata, or where the data simply doesn't exist anywhere else (e.g. privately produced DVDs), you can enter the metadata manually into the My DVDs module.

Genre	Release Year
Science Fiction	1984
Rating	Duration
PG	114

Here, you can modify the Genre, year of release, MPAA rating (e.g., PG, PG-13, R) and duration of the film in terms of minutes.

Studio
MGM

Modify the name for the film's studio (e.g., Universal Pictures, 20th Century Fox, etc.).

DVD Title
2010: The Year We Make Contact [WS]

Director
Peter Hyams

Starring
Roy Scheider; John Lithgow; Helen Mirren; Bob Balaban; Keir Dullea

You can also change the DVD title, Director and cast information.

Separate actors/actress names by semi-colons (e.g., Robin Williams; Harrison Ford; Catherine Zeta-Jones; etc.) so they appear correctly in Media Center.

Chapters

#	Chapter
1	Logos/Mission Report [2:55]
2	Main Title [1:26]
3	Floyd/Moments Of Truth [5:55]
4	"Something Incredible" [3:24]
5	Chandra & SAL [2:45]
6	Floyd's Family [5:01]

Each chapter of a DVD may or may not have a title. Simply supply or rename one here.

Use the scroll bar on the right to scroll through the chapters when there are more than will fit on the screen.

ain Title [1:26]

oyd/Mome

Something Incredible [3:24]

Insert chapter above

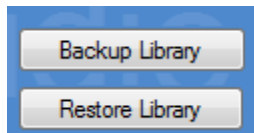
Delete chapter

Selecting a line and right-clicking with your mouse will allow you to insert new chapters, or delete the selected one.

You can also use the delete key on the keyboard to delete a chapter, and add additional chapters to the end of the list.

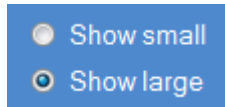
☐ Show movie file location

Checking the "Show DVD Movie..." checkbox allows the user to see the physical location of the outputted XML file. To backup existing XML files, simply press the Backup button.



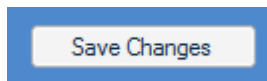
To backup existing XML files, simply press the Backup button.

Files will be stored in a single compressed folder (ZIP file) for convenience.



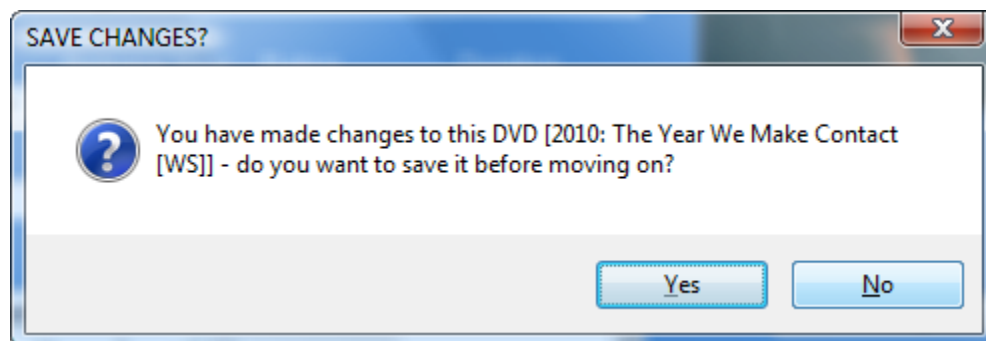
To change the cover art, select which cover to change (either small or large) and then click on the cover (or the blank pane where the cover should be).

Select an image from your hard disk as normal.



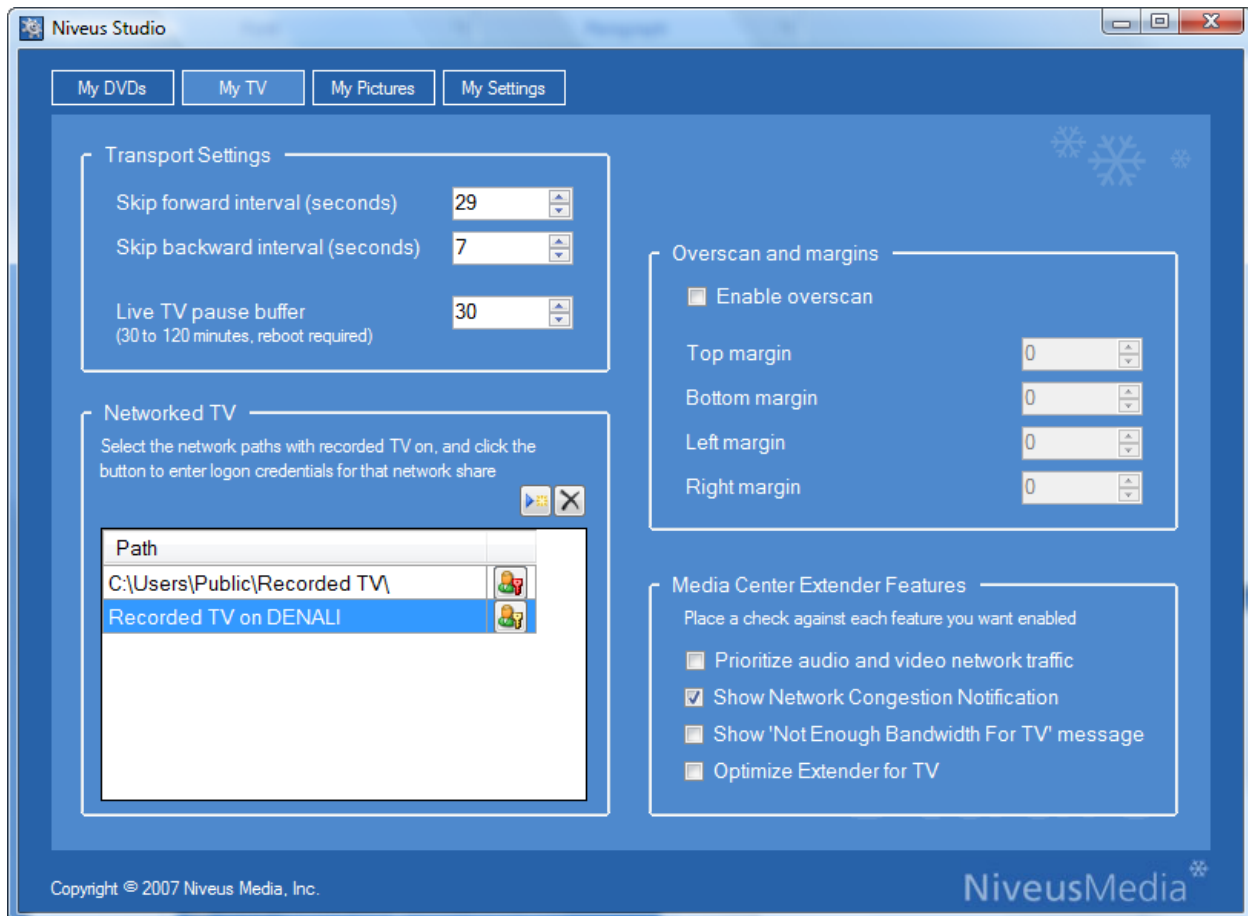
...Perhaps the most important component of **My DVDs**. Press the save button to update the film's XML file w/ everything you've just done.

If you navigate away from the current DVD without saving your changes first, you will be prompted to do so to ensure you don't accidentally lose any information.



Changing TV settings using My TV

Settings affecting the available content, viewing, and control of TV on the Media Center primary display and on Media Center Extenders can be configured here.



Changing the transport (playback) settings

Skip forward interval (seconds)	29
Skip backward interval (seconds)	7

When your customer presses the Skip Forward or Skip Backwards buttons on the remote control, Media Center skips the number of seconds defined by these two settings.

Live TV pause buffer (30 to 120 minutes, reboot required)	30
--	----

Not only does the Niveus Media Center support live television pause, but you can control how long the pause buffer is. The default value is 30 minutes, but you can raise this value to 120 minutes or any value in-between.

☐ Prioritize audio and video network traffic
☒ Show Network Congestion Notification
☐ Show 'Not Enough Bandwidth For TV' message

Allows AV network traffic to take priority over other network traffic, and indicate when network performance will cause video issues.

☐ Optimize Extender for TV

Optimizes Extender output and overscan for low-resolution TVs

☐ Enable overscan
 Top margin
 Bottom margin
 Left margin
 Right margin

Overscan and margins can be set to ensure that the entire picture is displayed correctly on your TV set.

Note: These options are for the primary Media Center display only, not for Media Center Extenders. Use "Optimize Extender for TV" to set overscan for extenders.

Setting up Networked TV


Niveus Studio includes a feature called "Networked TV" which allows you to configure access to remote Media Center recordings through the Recorded TV pages on the local Media Center in a secure way.

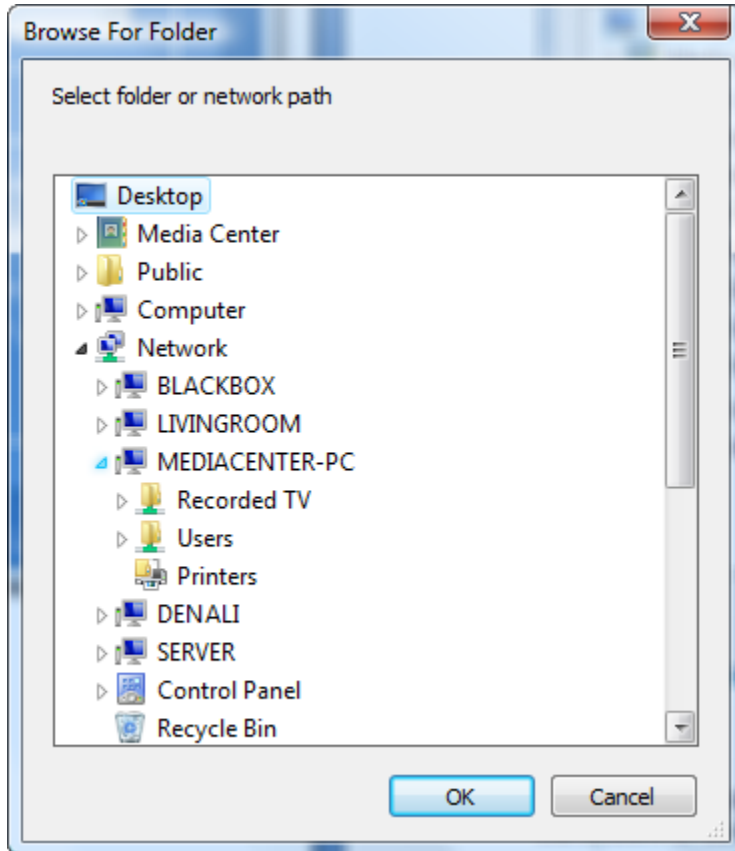
Select the network paths with recorded TV on, and click the button to enter logon credentials for that network share

Path	
C:\Users\Public\Recorded TV\	
Recorded TV on DENALI	

NOTE: Prior to setting up the networked TV connection, make sure that the Recorded TV folder on the remote Media Center is shared correctly on the remote machine, and that you can access the share on the local machine with the logon credentials you will use here. See "*Creating the network share on the remote Media Center*" below.

Adding a remote Media Center

Click on the  button to add a remote Media Center to Recorded TV on this Media Center. Select the remote Media Center and share name from the list presented and click OK.




Next, enter the logon credentials to use to log onto the remote system, in the format **SERVER**\User where **SERVER** is the name of the system and **User** is the username to be used on that system. If the remote machine doesn't use passwords, leave the password field blank.




Once the remote Media Center is networked in, the Media Center shell may need to be restarted to see the additional Recorded TV content. During the initial connection it may take a few seconds for the new content to appear.

Removing a remote Media Center

Click the  button to remove a remote Media Center from this list. This option will not take effect until the system is restarted.

Changing logon credentials

If you make a mistake in setting up the logon credentials, click on  to change them (a red key indicates no credentials have been entered).

Creating the network share on the remote Media Center

To view the Recorded TV content on a remote Media Center, a network share must be set up on the remote machine with the correct access privileges set. You can create a network share in the "Network and Sharing Center" in Windows Vista, or from a command prompt as follows:

```
NET SHARE "Recorded TV"="C:\Users\Public\Recorded TV" /GRANT:Everyone,CHANGE
```

This command creates a new share called "Recorded TV" which points to the Recorded TV folder in C:\Users\Public. If your recorded TV folder is in a different location, enter that location here.

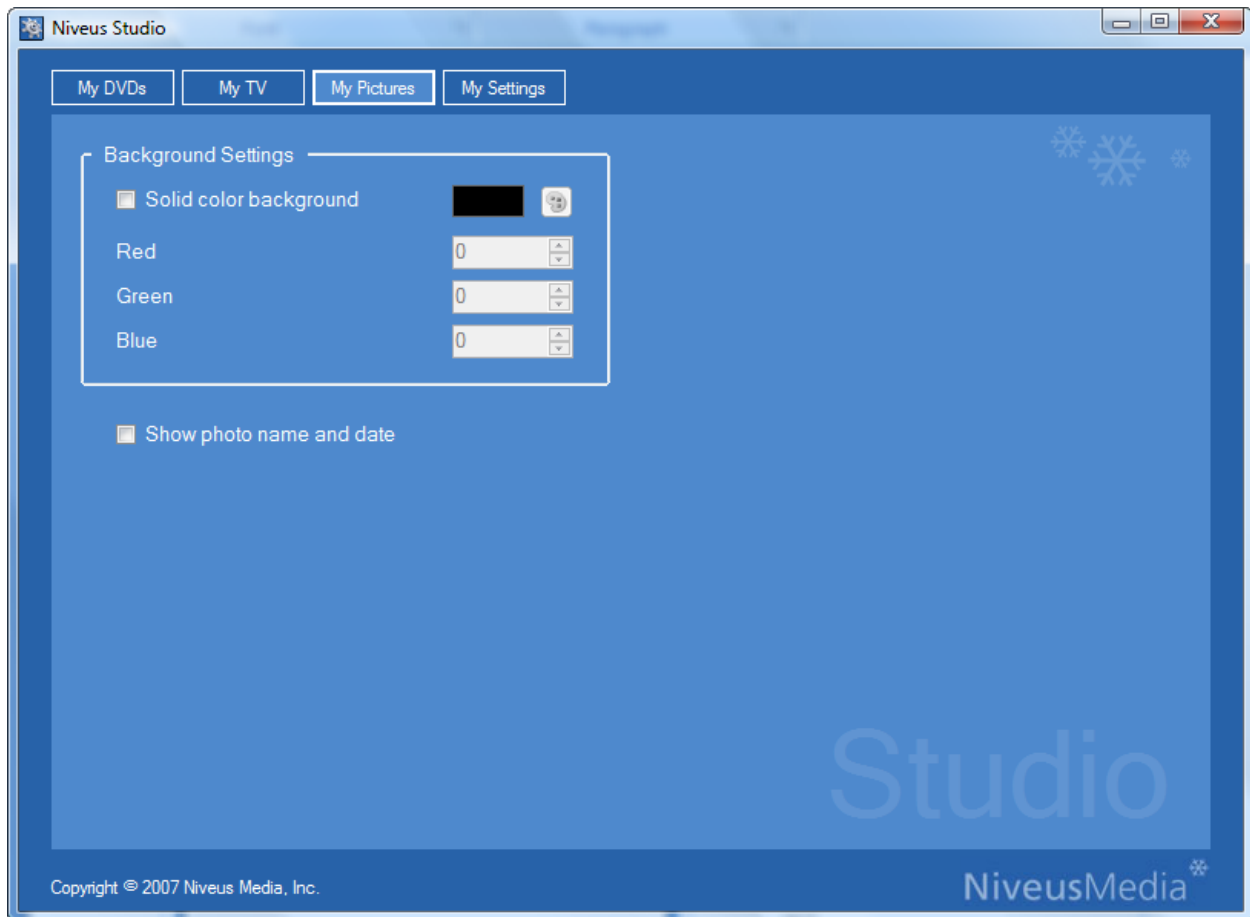
This command creates the share with open access (GRANT:Everyone). To further secure your network if required, you can change these settings to only grant access to a specific user or users, and grant READ instead of CHANGE.

NOTE: Granting READ only access will not prohibit users from deleting content from their Recorded TV view, but it will stop the file from actually being deleted (and will cause an error message when the delete operation is attempted).

You may also need to enable file sharing on your Media Center, and/or disable password protected sharing, depending on how your network is configured. Please consult your network administrator for further details.

Modifying picture settings with My Pictures

Settings affecting the display of photos and other pictures can be configured here.



☒ Show photo name and date

Enable the display of photo-names and –dates in the **My Pictures** component of Media Center.

☒ Solid color background

Red

0

Green

0

Blue

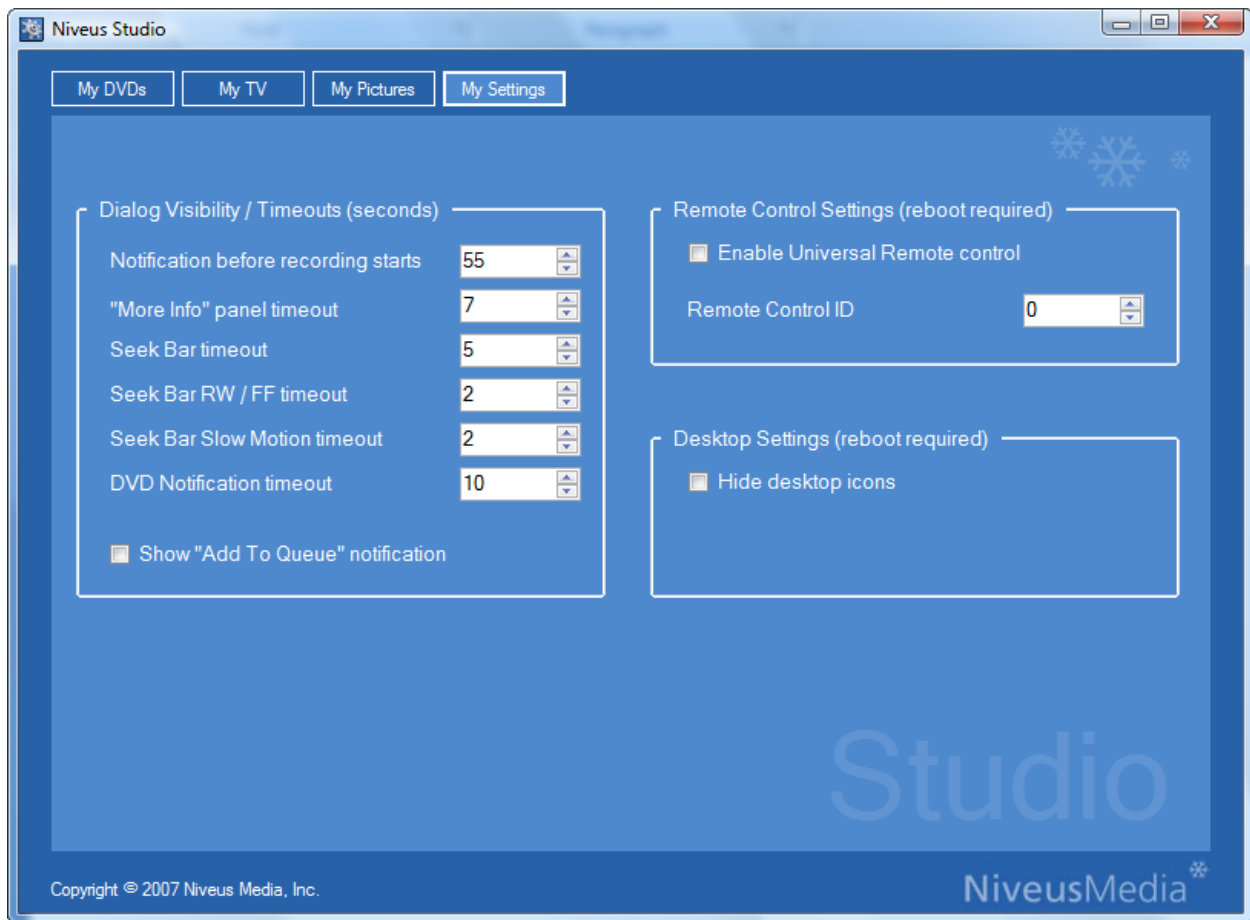
0

When you are viewing your pictures in Media Center, a background color usually accompanies formats that are not 4:3. To set the proper mood for corresponding photographs, select a color of choice. You have the choice of red, green, and blue shades or selections through a color map.

To enable the controls, place a check mark next to “Solid color background”.

Modifying dialog and control properties using My Settings

General settings relating to the overall control of Media Center are configured here.



☐ Enable Universal Remote control

This feature toggles universal remote control support, which comes in handy if the customer does not like the standard Media Center remote.

NOTE: You must restart your Media Center for this change to take effect.

Remote Control ID

0

Allows the pairing of individual Media Center remote controls to individual Media Center systems. Allows two Media Center systems in the same room to be controlled separately.

NOTE: You must restart your Media Center for this change to take effect.

Notification before recording starts	55
"More Info" panel timeout	7
Seek Bar timeout	5
Seek Bar RW / FF timeout	2
Seek Bar Slow Motion timeout	2
DVD Notification timeout	10
<input type="checkbox"/> Show "Add To Queue" notification	

Sets timings and timeouts for various dialogs that appear within Media Center.

All timings are in seconds.

<input type="checkbox"/> Hide desktop icons

Stops icons being displayed on the desktop of the Media Center.

Support & Upgrades

Niveus Media is committed to supporting our users with the latest product updates and related items.

The Niveus Media website has an extensive library of product related information, including specific FAQs, software downloads, and product documentation.

Please visit <http://niveusmedia.com/support.html> for more information on Niveus Media Products.

For live Technical Support, call (866) 258-2929 from the United States and Canada. If calling from an international location, please dial +1 408.942.2929.

Hours of operation are from 8:00am to 5:00pm Pacific (California) time, Monday through Friday.