

## NIVEUS MOVIE LIBRARY – SETUP GUIDE



### Niveus Media Center – Movie Library 1.5 For Vista-based Niveus Systems

The Niveus Movie Library allows control of your collection of movies—both disc and local storage—from the convenient and familiar interface of Windows Media Center.

Monitor folders of movie locations, including DVDs in the Niveus Ice Vault Disc Changer or

local player, and view detailed movie information for all supported formats in one rich and compelling interface, complete with metadata and cover art.

With Version 1.5, Movie Library now supports Disc-In-Drive, which allows the user to view the disc (any format) in their local drive and play it directly. Additionally, Movie Library now presents a Copy Disc button via the Movie Library interface, allowing for copying of movies into your library through a 10' interface using the remote control. Movies copied with Movie Library 1.5 will have expanded metadata information and high resolution cover art!

### Getting Started

1. There are two pieces to the Movie Library application—the Vista (MCML) Interface and the 2' Movie Gallery Configuration
2. Individual DVDID XML information is required in the root folder of each movie location (Note: Movies copied through Movie Library will automatically have the metadata information & cover art inserted)
3. Each movie must have its own folder location

### Preparing Your Collection for the Niveus Movie Library

Configuring your collection with the required DVDID XML information will allow the Movie Library application to properly gather & display the appropriate movie information.

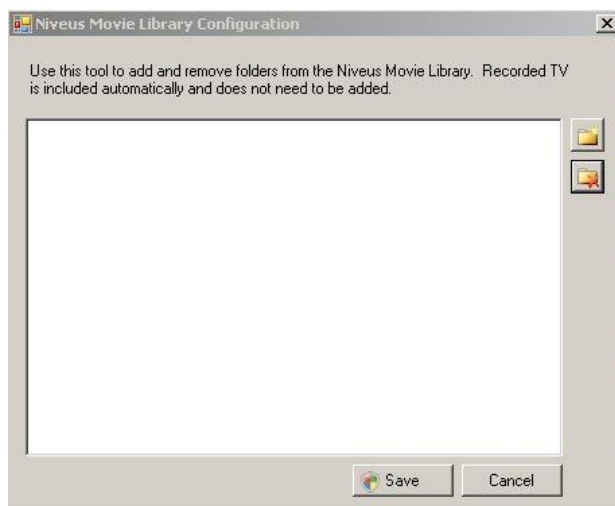
1. Install the Movie Library application on your Vista-based Niveus Media Server
2. Ensure that your movies are in their appropriate folders with the below requirements:
  - a. Each individual movie must have its own folder: e.g., C:\Movies\Title1
  - b. Each movie must have the appropriate DVDID XML information file found in the same folder (Note: Ice Vault DVDs & RecordedTV movies do NOT require this)
    - i. To manually import the DVDID XML data, you can use a 3<sup>rd</sup> party website such as [www.DVDXML.com](http://www.DVDXML.com) and place that XML file into the folder
  - c. If a specific DVD Cover Art is required, place that file in the above folder (NOTE: Image name must be exactly this: "folder.jpg")

## Select Folders to Monitor

By default, the Niveus Movie Library will detect & display any movies found in a Niveus Ice Vault DVD Changer, as well as Movies from your RecordedTV collection. If you would like to select folders on your system/network which contain other movie files, you can use the Configure Movie Library utility which is installed with the application.

1. Launch the Movie Configuration tool found under **Start > Niveus Media > Movie Library > Configure Movie Library**

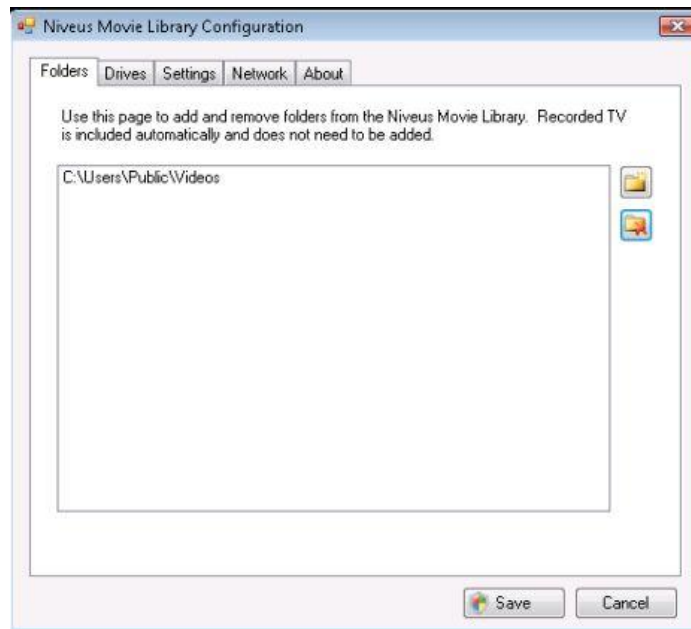
**\*\*NOTE:** To view NETWORK LOCATIONS, ensure you have Network Folder Discovery enabled, by clicking START > Network



2. Click the Icon on the upper right to add folders to monitor, and browse to the local/network location which contains your movie folders:



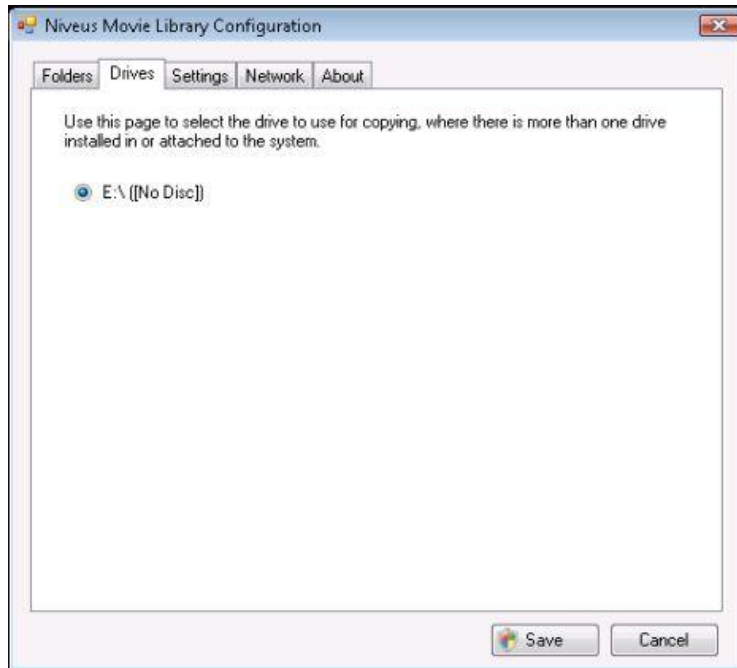
3. Repeat the above steps for as many locations as desired. In the end, your location should be shown in the configuration utility:



4. Click **SAVE**. A dialog will appear confirming that the changes were made. You are now ready to launch the Niveus Movie Library.

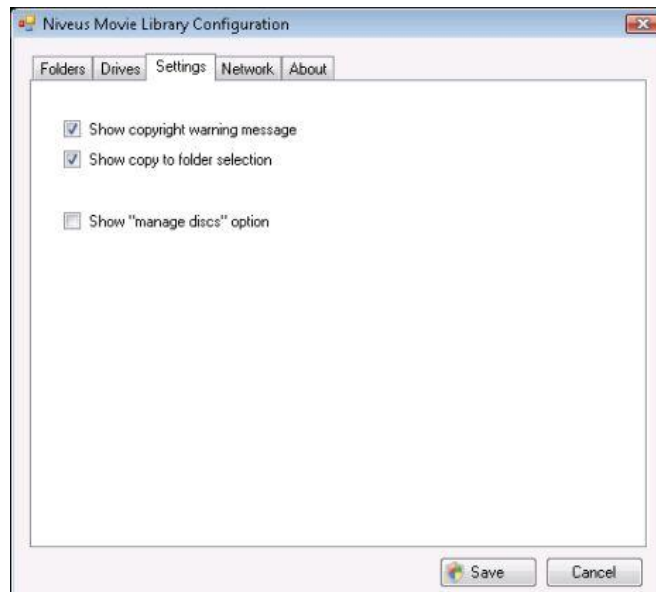
## Drives

If you have multiple drives connected to the system (e.g., Ice Vault, DVD Drive, etc.), you can use the “Drives” tab to select the drive. From here, you will see all available drives. Check the box to enable the drive you wish Movie Library to use as your default for copying.



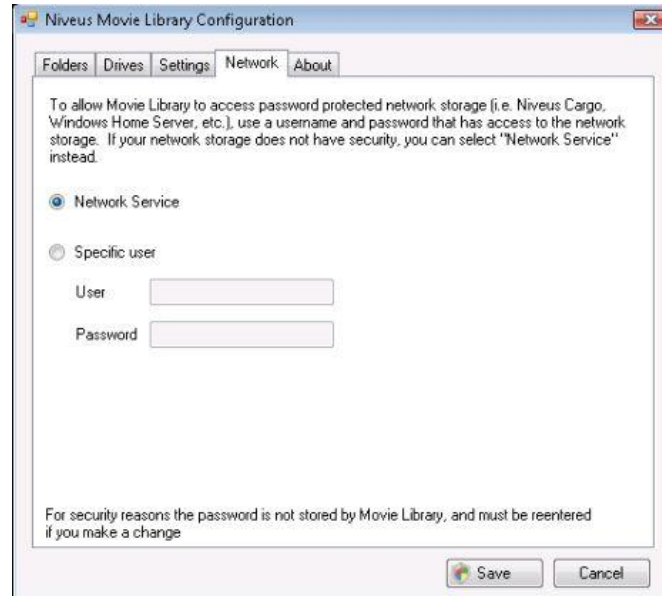
## Settings and Manage DVD Changers

Now added with Version 1.5, there is a “Settings” tab. From here you can choose to re-enable/disable the warnings included in Movie Library. Also, you can enable the “Manage Discs” feature which is required if you are using a Niveus Ice Vault DVD Changer.



## Configuring Your Network

The “Network” tab is designed to support copying to another device on your network. If you are using an older Niveus A/V Storage Server, the “Network Service” which is enabled by default, will allow you to copy movies to that location. If you are using a CARGO Storage Server or other Windows Home Server system, you will need to enable the “Specific User” account.

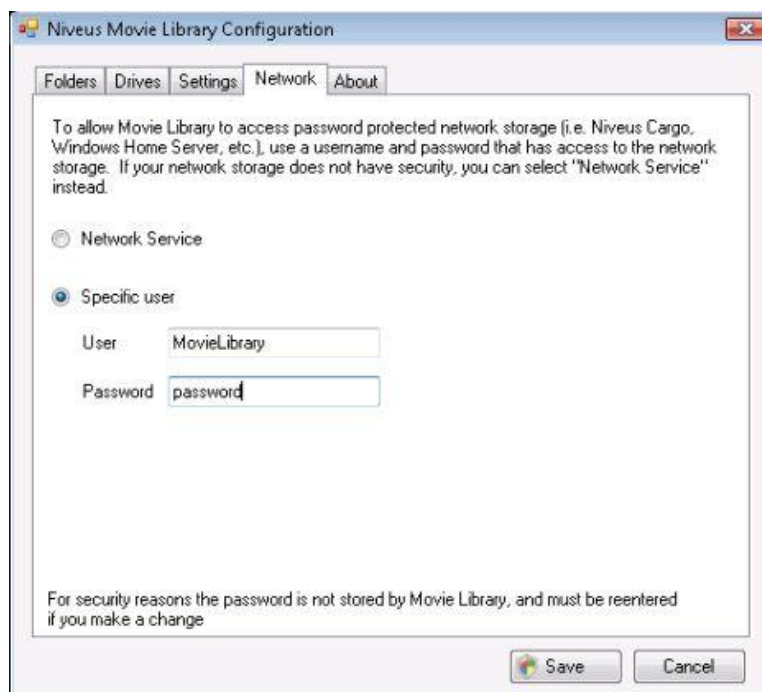


There are several requirements needed for successful configuration:

1. The Niveus Media Center must be configured with the Windows Home Server Connector software, and a **password** must be established.
2. IF you do not wish to have a password on the main system account, you can create a separate user on both the Niveus System and your CARGO Windows Home Server:
  - a. Click on Start > Control Panel > User Accounts > Manage Another Account > Create a New Account > Create an Administrator
  - b. Name the user, and make sure you enable a password
  - c. Open the Windows Home Server Console > Users > Add New User



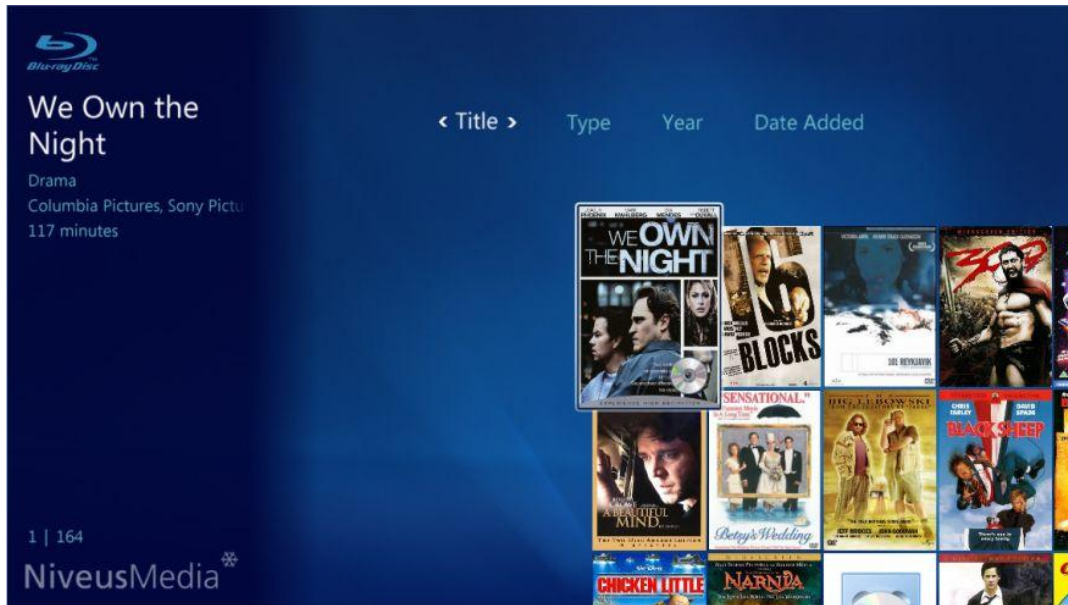
- d. Use the same name & password combination as you did above
3. With the user created on both the Niveus Server and the CARGO Server, enter the user & password created in the “Specific User” location as shown below.



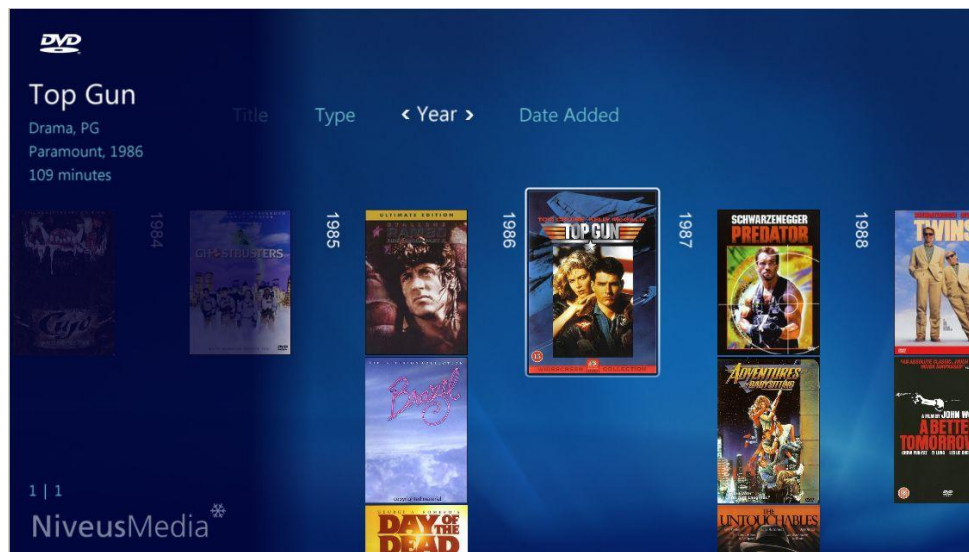
4. Click “Save” to complete the configuration

## Accessing your Movie Collection via the Niveus Movie Library

Now that Movie Library is properly configured, it's time to view your collection from within the Vista Media Center interface. Open Media Center and go to the **MOVIE LIBRARY** icon in your menu system.



Upon the initial load, it will take a few seconds for the library to populate and update with the appropriate data & cover art. Please be patient while it's loading. When done, your library will look like this:



To access the top pivot sections, you need to scroll to the top of the screen, then click the side arrows to change the grouping. Current views supported are: by Title, Type, Year (year movie was released), and Date Added.

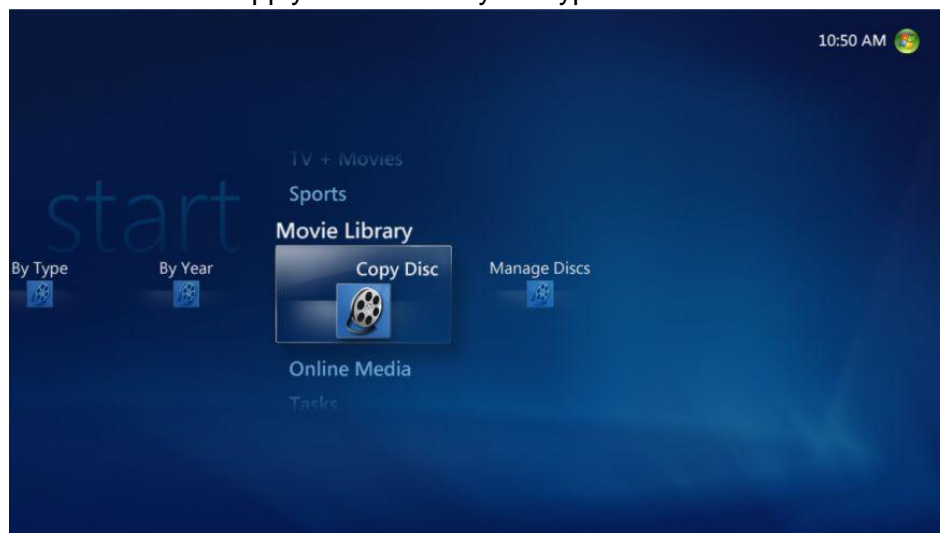




Clicking on a movie takes you to the Movie Information page, which shows the metadata, title and other pertinent information. Use Page Down/UP to scroll through the Movie Description. If applicable, movies with similar genres will show up on the “You may also like...” row at the bottom of the screen.

## Copying Discs using Movie Library 1.5

Movie Library 1.5 enables the ability to copy a movie disc to your collection. To access this feature, you will see the icon “Copy Disc” under the “Niveus Movie Library” strip. Movie Library will create a bit-for-bit copy of the disc. \*\*\*Playback is supported for discs without copyright protection. Niveus does not supply or embed any decryption software. \*\*\*



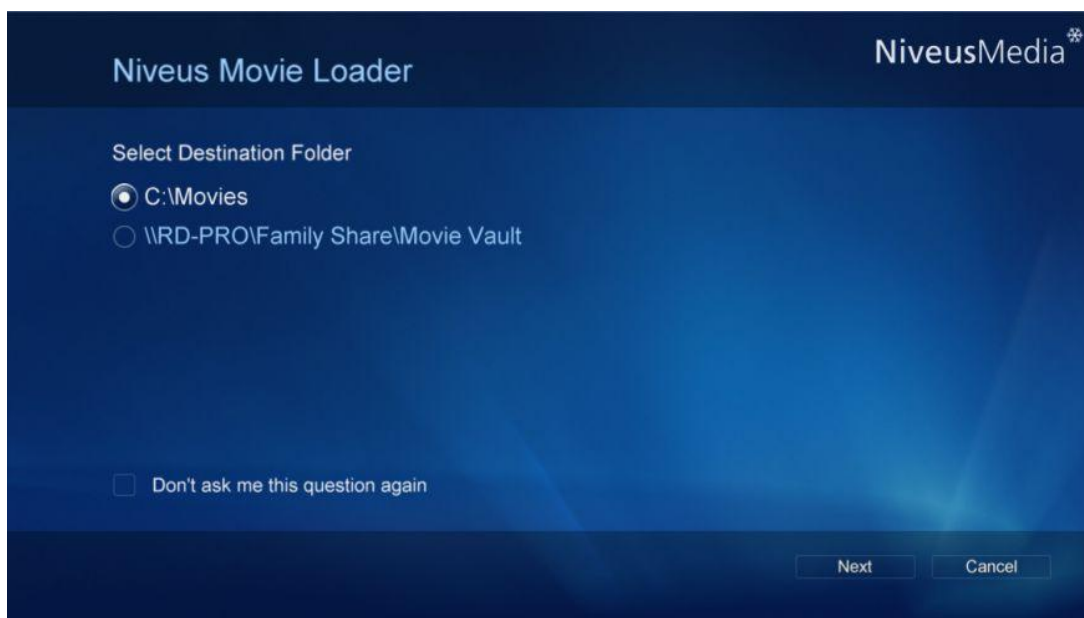
The first screen you will see instructs you on the process and a warning regarding illegal duplication of discs. To continue, select next. If you check the “Don’t show this message again”



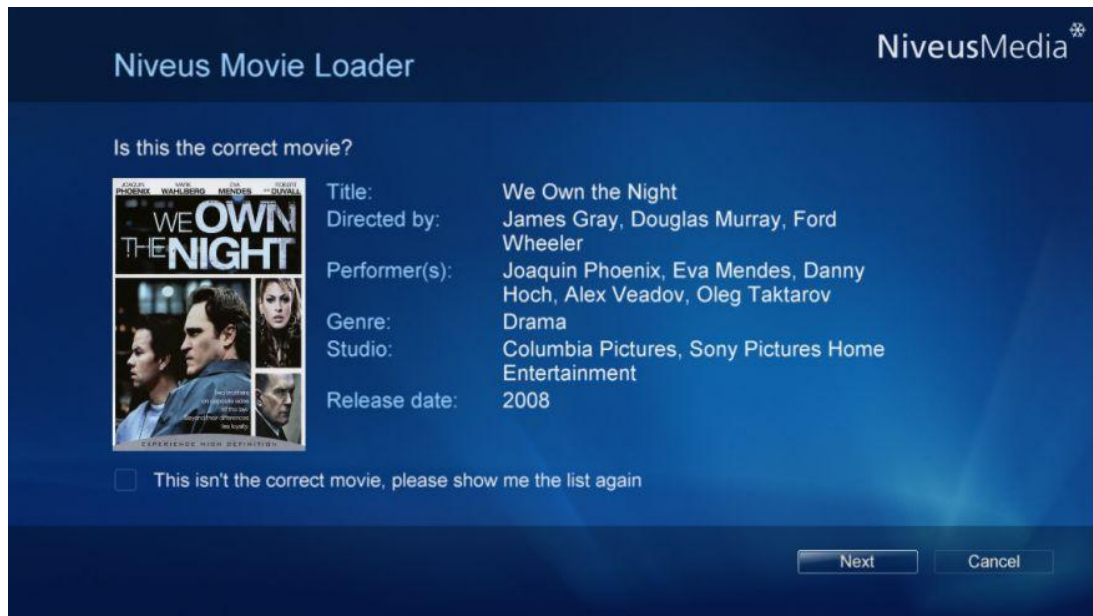
box and would like to reset it to display in the future, reset the settings using the Movie Library Configuration Tool.



The next step is to select your Destination Folder for where you want the movie copied to. If you wish to always copy to a specific folder, you can click the checkbox next to “Don’t ask me this question again” and you will not see the prompt the next time you copy. NOTE: You will not see this screen if you have configured only one folder in the Configuration Tool—that folder will be set to default.



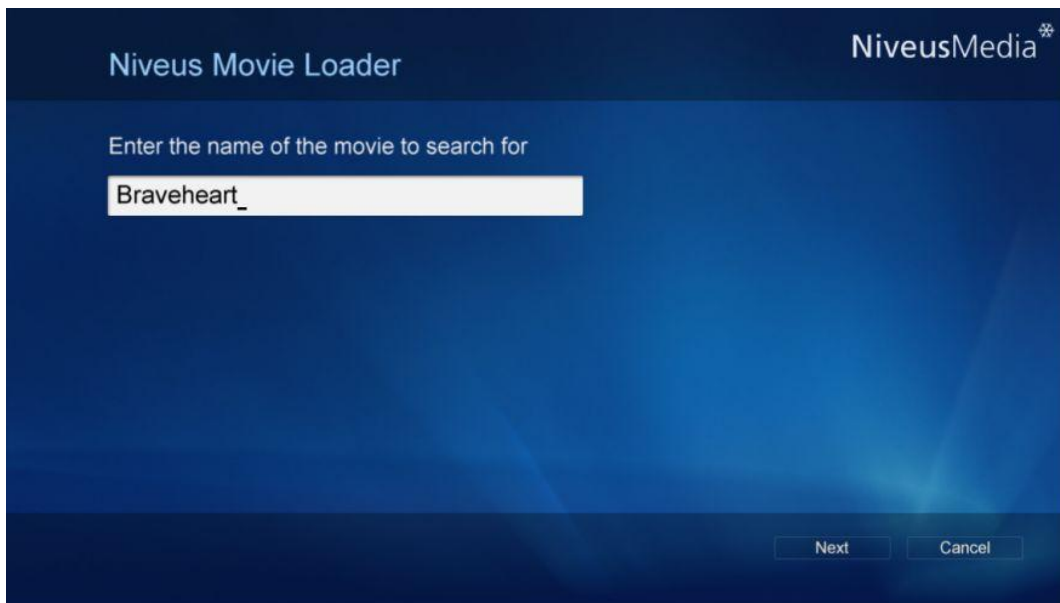
If the disc is in the Movie Library 3<sup>rd</sup> party database, then you will see a screen confirming the disc information and high resolution cover art. If that is not the correct disc, you can select “This isn’t the correct movie, please show me the list again.”



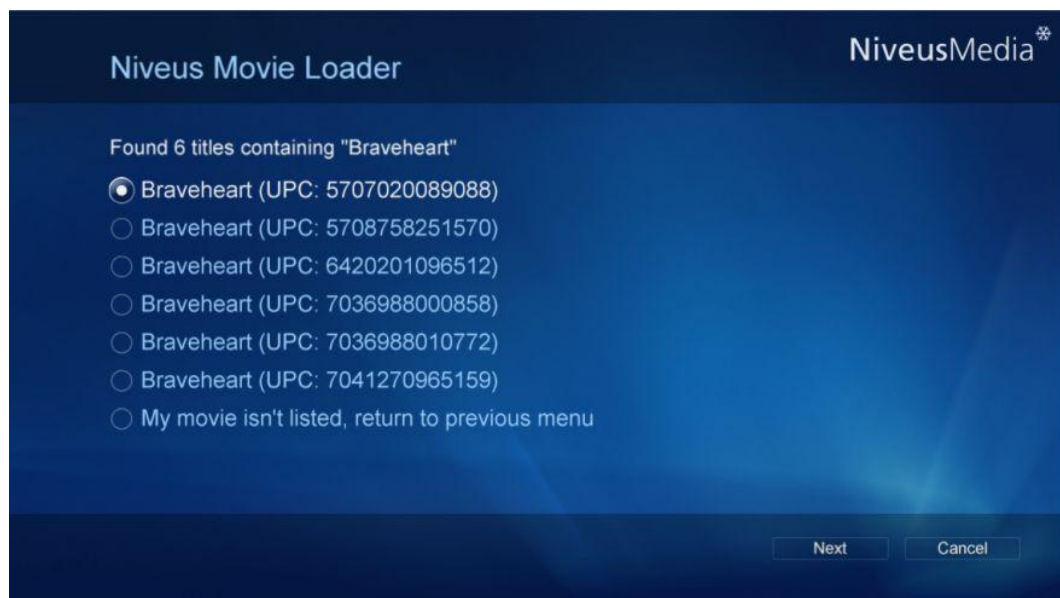
If you select to be shown the “list” as mentioned above, or if the disc is not detected automatically, you have the option to either search for a title or to manually enter the movie information.



You can enter the title using a keyboard or your remote using T9, where the numbers stand for letters (i.e., press “2” three times for the letter “C”)



If there are results to your search, they will appear in a list format. Next to each title will be the UPC Barcode to match with your appropriate disc. If no matches are found, or if your title is not shown, you can click “My Movie isn’t listed, return to previous menu.”



If no proper match is found, you can manually enter the Movie Title and other information.  
 \*\*\*Please note: If you copy a movie using a manual entry, and later discover that the title is in the database, it will update the metadata without re-copying the entire disc.

Niveus Movie Loader

NiveusMedia

Enter the movie information below:

Movie Title

Synopsis

Studio

Next Cancel

## Support & Upgrades

For any troubleshooting or FAQs, visit <http://www.niveusmedia.com>